

## MAIN SPECIFICATIONS

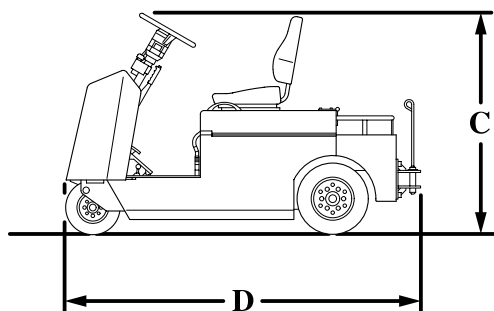
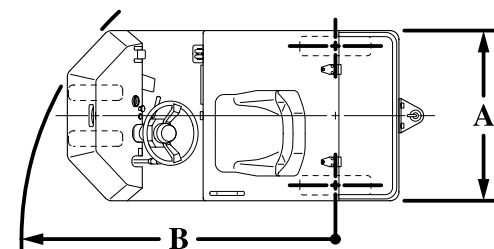
Model			CBT4	CBT6	CBTY4
Operator Position			Rider Seated	Rider Seated	Stand up
Maximum Drawbar Pull	3-Minute Ratings	N (kg)	3920(400)	4410(450)	3920(400)
	60-Minute Ratings	kg	4000	6000	4000
Overall Width	A	mm	965	965	965
Turning Radius (Outside)	B	mm	1775	1775	1600
Overall Height	C	mm	1250	1250	1185
Overall Length	D	w/ Hitch	2020	2020	1755
		w/o Hitch	1880	1880	1615

## BATTERY AND MOTOR SPECIFICATIONS

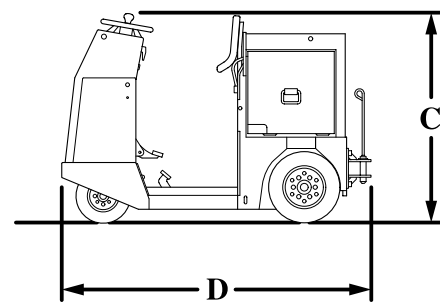
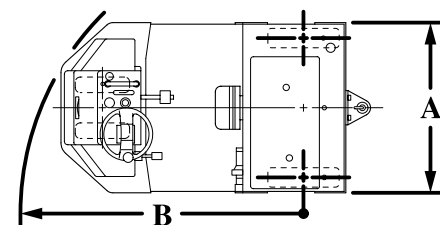
Model			CBT4	CBT6	CBTY4	
Battery	Voltage/Capacity (5-hour ratings)	STD	V/AH	48/210<216>	48/280<216>	48/160
		High	V/AH	48/280<305>	48/370<305>	48/250
Electric Motor	Drive	kW	2.6	4.9	2.6	
Control Type			Transistor Chopper	Transistor Chopper	Transistor Chopper	

NOTE : < > for Roll-out type battery

■ CBT4 / CBT6



■ CBTY4



Availability and specifications are determined regionally and are subject to change without notice.  
Please consult your Toyota representative for details.

Printed on recycled paper.



**TOYOTA Material Handling Company**  
A Division of TOYOTA INDUSTRIES CORPORATION  
CAT.CBT4-6/CBTY4(E)/E-0309/©/Printed in Japan/No.711090E0/2,500

## ELECTRIC POWERED TOWING TRACTOR

# CBT/CBTY

## SERIES

