



The VCE100 is the smallest Combi truck in the successful BT VNA man-up range. Though small in size, the VCE100 offers high performance and excellent capacity in VNA order picking and pallet handling applications.



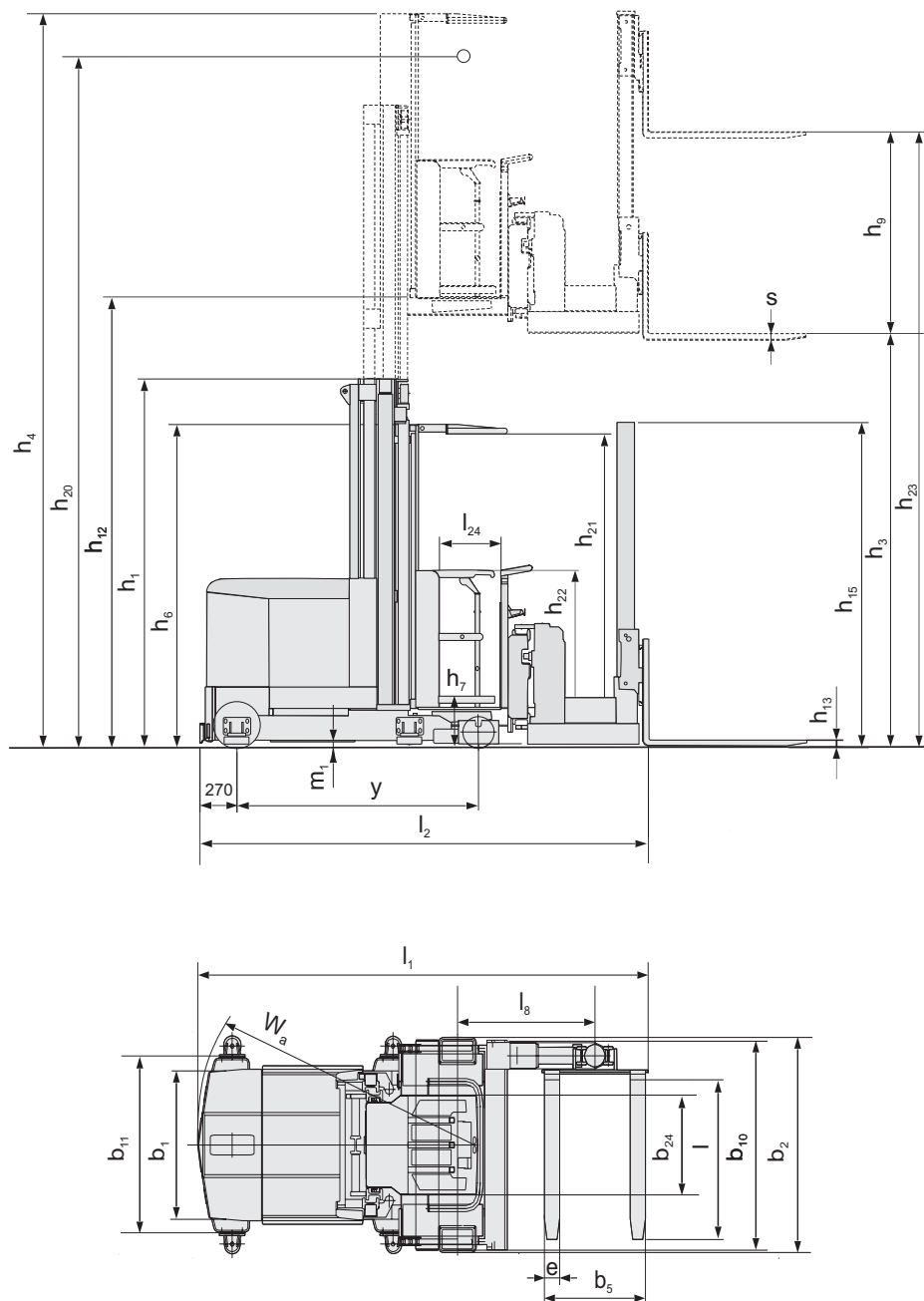
Technical Details	VCE100	
Power unit		electrical, battery
Operating type		stand on/ride on
Rated capacity	kg	1000
Load centre	mm	600
Weight without battery, min./max.	kg	2815—3615
Wheel type		Vulkollan
Wheel dimension, fork side	mm	Ø 240 x 140
Wheel dimension, drive wheel side	mm	Ø 343 x 140
Number of wheels, fork side		2
Number of wheels, drive wheel side		1
Travel speed, without/with rated load	km/h	9.0/8.5
Main lifting speed, without/with rated load	m/s	0.39/0.36
Auxiliary lifting speed, without/with rated load	m/s	0.40/0.30
Main lowering speed, without/with rated load	m/s	0.35/0.40
Auxiliary lowering speed, without/with rated load	m/s	0.20/0.40
Drive motor/Intermittent rating (S2 60')	kW	5.2
Lift motor/Intermittent rating (S3 15%)	kW	13.5
Battery weight, min.	kg	1085
Battery (5h discharge)	V/Ah	48/700
Battery (5h discharge)	kWh	33.6
Service brake		electric
Parking brake		electro-mechanical
Steering system		electric, AC
Speed control		Variable AC

Dimensions, mm	VCE100	
y	Wheel base	1765
b <sub>10</sub>	Track width fork side c/c	1000—1500
b <sub>11</sub>	Track width rear c/c	0
h <sub>6</sub>	Height of cab	2370
h <sub>7</sub>	Instep height	330
h <sub>9</sub>	Auxiliary lift movement	1600, 1800
h <sub>13</sub>	Height of lowered fork	60
h <sub>15</sub>	Height of auxiliary lift mast	2370, 2570
h <sub>21</sub>	Height of cab inside	2100
h <sub>22</sub>	Height of cab sides	900
l <sub>1</sub>	Total truck length	3474
l <sub>2</sub>	Truck length incl. fork front face	3228
l <sub>8</sub>	Front axle to boom pivot	967—1312
l <sub>24</sub>	Entrance width	430
b <sub>1</sub>	Chassis width, back	1070
b <sub>2</sub>	Chassis width, front	1150—1650
b <sub>24</sub>	Cab width	1280-1780
s	Fork thickness	40
e	Fork width	100
l	Fork length	1200 (800—1400)
b <sub>5</sub>	Width across fork	544/620/772
m <sub>1</sub>	Floor clearance	50
W <sub>a</sub>	Turning radius	2017

Truck performance and dimensions are nominal and subject to tolerances.  
BT Products AB products and specifications are subject to change without notice.  
All data is based on VDI 2198.

Mast, mm	VCE100 Duplex Tele						
<b>h<sub>12</sub> Platform height</b>	<b>3210</b>	<b>3710</b>	<b>4210</b>	<b>4710</b>	<b>5210</b>	<b>5710</b>	<b>6210</b>
<b>h<sub>3</sub> Lift movement</b>	<b>2900</b>	<b>3400</b>	<b>3900</b>	<b>4400</b>	<b>4900</b>	<b>5400</b>	<b>5900</b>
<b>h<sub>20</sub> Picking height</b>	<b>4810</b>	<b>5310</b>	<b>5810</b>	<b>6310</b>	<b>6810</b>	<b>7310</b>	<b>7810</b>
<b>Standard Auxiliary</b>							
<b>h<sub>23</sub> Total lift height<sup>1)</sup></b>	<b>4540</b>	<b>5040</b>	<b>5540</b>	<b>6040</b>	<b>6540</b>	<b>7040</b>	<b>7540</b>
<b>h<sub>1</sub> Height of truck, min.</b>	<b>2450</b>	<b>2700</b>	<b>2950</b>	<b>3200</b>	<b>3450</b>	<b>3700</b>	<b>3950</b>
<b>h<sub>4</sub> Height of truck, max.</b>	<b>5270</b>	<b>5770</b>	<b>6270</b>	<b>6770</b>	<b>7270</b>	<b>7770</b>	<b>8270</b>
<b>High Auxiliary (Option)</b>							
<b>h<sub>23</sub> Total lift height<sup>1)</sup></b>	<b>4740</b>	<b>5240</b>	<b>5740</b>	<b>6240</b>	<b>6740</b>	<b>7240</b>	<b>7740</b>
<b>h<sub>1</sub> Height of truck, min.</b>	<b>2570</b>	<b>2700</b>	<b>2950</b>	<b>3200</b>	<b>3450</b>	<b>3700</b>	<b>3950</b>
<b>h<sub>4</sub> Height of truck, max.</b>	<b>5470</b>	<b>5970</b>	<b>6470</b>	<b>6970</b>	<b>7470</b>	<b>7970</b>	<b>8470</b>

1)  $h_{23} = h_3 + h_9 + s$





- The stable chassis and rigid duplex mast allows the VCE100 to lift a 1000 kg load up to 6.0 m and 700 kg up to 7.5 m.
- The spacious cab is designed to encourage peak operator performance by keeping stress and strain to a minimum.
- The advanced hydraulic lift system combined with smooth acceleration and "Optipace" drive speed regulation allows very fast and confident load handling.
- The Can-Bus simplifies the electrical system by reducing wiring and increases the flexibility of the truck control system.
- A compact truck for compact storage that fits into a 1460 mm wide aisle with ease. Can be adapted to fit most common aisle and load sizes as standard.

Truck features	VCE100
Adjustable width over forks	S
Elevating platform	S
Wire/rail guidance	O
Controls and instruments	
Electronic height indicator	S
Power/electronic steering	S
Steering direction indicator	S
Driving features	
Automatic deceleration	S
Electronic braking system	S
Electronic speed control	S
Safety features	
Automatic parking brake	S
BT Optipace system	S
Clear view mast	S
Electronic support arm brakes	O
Drivers compartment features	
Adjustable seat	S
Adjustable steering wheel	S
Low step-in	S
Writing table	O
Maintenance features	
Fault diagnosis facility	S
Battery management features	
Battery status indicator	S
Battery discharge prevention system	S
Sideways battery change	S

S = Standard feature

O = Optional feature

— = Not available

BT  
 SE-595 81 Mjölby Sweden  
 Tel: +46 (0)142 860 00  
 Fax: +46 (0) 142 866 00  
 Email: info@bt-forklifts.com  
 www.bt-forklifts.com

